

Erasmus Fact Sheet



Name of Institution:

**Technological University of the
Shannon: Midlands Midwest**

TUS Midwest

- TUS Limerick City Moylish Campus
- TUS Limerick School of Art & Design (LSAD)
- TUS Thurles Campus
- TUS Clonmel Campus
- TUS Ennis

For information on the TUS Midwest campuses see [here](#)

TUS Midlands

- TUS Athlone Campus

For information on the TUS Midlands campus see [here](#)

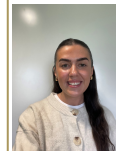
<https://tus.therack.live/international-student-guide>

Website:
www.tus.ie

Erasmus Code:
IRL SHANNON02

Organisation
ID code (OID):
E10284421

Participant
Identification
Code (PIC):
889135563



Kate Mulcahy

Erasmus Officer
erasmus@tus.ie
+35361293448



Marta Johnston

Erasmus Coordinator
erasmus@tus.ie
+35361293448



Academic Calendar

Semester 1
Early September – Mid-December

Semester 2
Early January to Mid-May

*Dates may vary depending on
the programme of study chosen.*

Nomination Deadline

Autumn/Full Year students: **1st May**
Spring students: **15th October** (*Limerick Only*)

Application Deadline

Autumn/Full Year students: **20th May**
Spring students: **1st November** (*Limerick Only*)



Nomination & Application



Procedure

The home university should nominate the student(s) via the nomination form. Please request this through email.

The following information is mandatory:

- Student's Name & Surname
- Student's Contact Email
- Study period (Autumn, Spring or Full Year)
- Subject Area of nomination
- Any other relevant information (e.g., required disability support)

The TUS Erasmus Office will contact the nominated students and explain the application process which must be completed by the deadline.

Application Documents

- Application Link
- Portfolio (for relevant Art & Design programmes)
- Transcript of Grades to date
- Scanned Copy of Passport
- Copy of Health Insurance
- Official Proof of English Competency

Language Skills Required

English

CEFR B2 / IELTS 6.0
Other English language certifications or letter of recommendation from Erasmus partner institution will be considered on a case-by-case basis.

Students with Special Needs

TUS welcomes Erasmus students with a disability. If you have a disability and feel you may need support during your time with us, you can register with the Disability and Learning Support service on arrival. If you are a user of Assistive Technology, you are welcome to bring this with you.

ECTS credits

Students are not permitted to take 30 credits per semester. It is not possible to study modules/subjects from different departments or years. Students are not permitted to change their registered electives.

Travel Information



Notice for Non-EU students

For non-EU Exchange students or Erasmus students with non-EU citizenship, we ask that our university partner contacts us well in advance of the below deadlines to nominate their student to us.

Orientation

An Orientation Week takes place one week prior to the academic term start date for all International and Exchange students.

Attendance at orientation is mandatory and free of charge.

Airport

Limerick

If arriving at Shannon Airport, a free taxi can be arranged to Limerick City for arriving students.

If arriving at Dublin Airport, take either the [Citylink/Eireagale](#) to Limerick City Centre, Arthurs Quay.

EU Citizens

No visa is required to study at TUS, as Ireland is an EU state.

Non-EU Citizens

Please consult the Irish Government's Immigration website [here](#)

Recommended arrival date

1 week before start

Athlone

If arriving in Dublin airport then take either the [Aircoach](#).

Accommodation



Accommodation Links

[Athlone](#) [Limerick](#)

Cost of Living

Monthly estimates:

Accommodation: **€650 - €800**
Study material/books: **€50-**
Food/drinks: **€200 - 300**

Deadlines for Accommodation

Once accepted to TUS, students are advised to book accommodation as soon as possible as availability is limited and most accommodation providers have a 'first come, first serve' policy.

About TUS



- A new multi-campus university spread across six campuses in Athlone, Limerick City, Thurles, Clonmel and Ennis.
- TUS has one of the highest graduate employment rates in Ireland.
- Over 14,000 students from 110+ nationalities enrolled in hundreds of programmes from Bachelor to PhD.
- Students enjoy personalised service from the international office and academic staff, offered in a friendly and supportive environment.
- Active learning is central at TUS with a blend of practice and theory in every discipline area.
- Free Academic Supports including academic writing and English classes on campus.
- Industry engagement is a core ethos with paid placement opportunities on almost all programmes.
- Lower living costs – Athlone & Limerick are up to 50% more affordable than Dublin.